

Community Report



Global Brigades Ghana
Medical / Dental Brigades
New Hampshire
January 10, – January 19, 2014
[Ekotsi](#)

Community Report

Ekotsi

Total number of patients attended : 737

Male: 259

Female: 478

DIAGNOSIS

| | |
|------------------------------|-----|
| Respiratory diagnosis | 32 |
| Gastrointestinal diagnosis | 28 |
| Infectious disease diagnosis | 97 |
| Pain diagnosis | 164 |
| Dermatology diagnosis | 11 |
| Chronic diagnosis | 0 |

DENTAL

| | |
|------------|----|
| Extraction | 46 |
| Filling | 0 |
| Sealants | 0 |

OBGYN

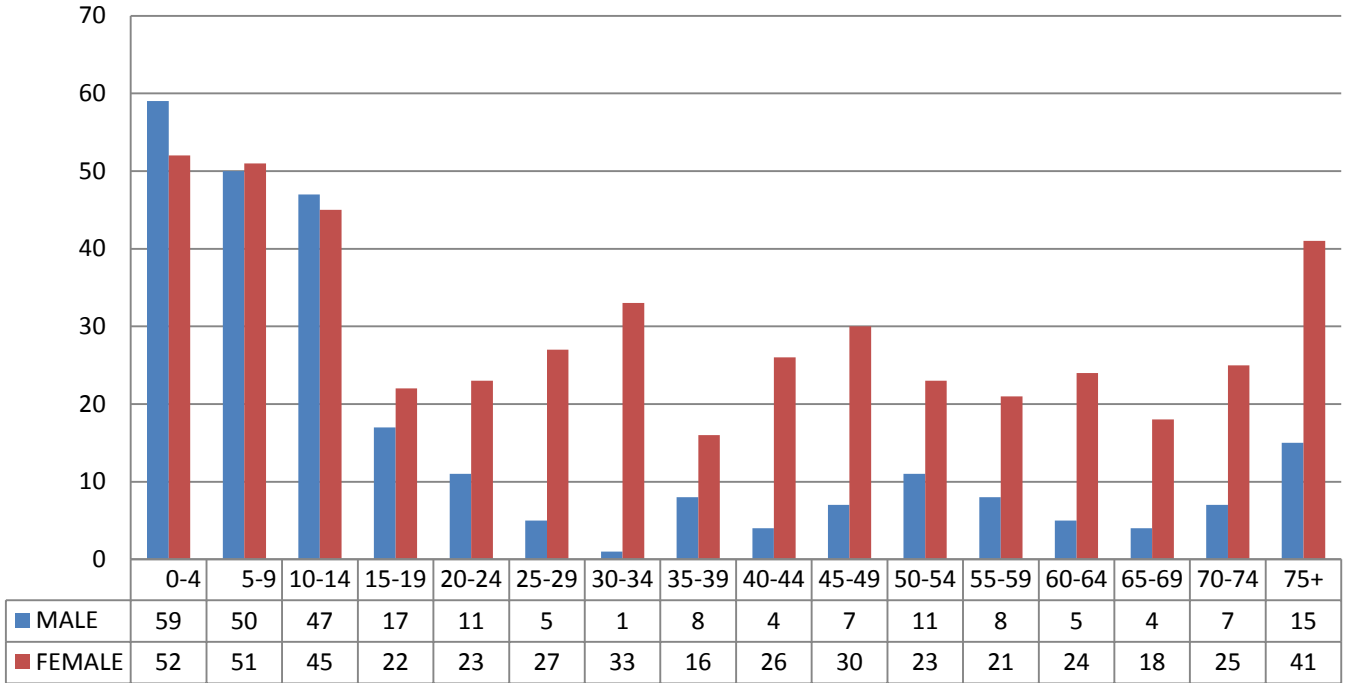
| | |
|--------------------------------------|----|
| Number of Cervical Cancer Screenings | 90 |
|--------------------------------------|----|

REFERRAL

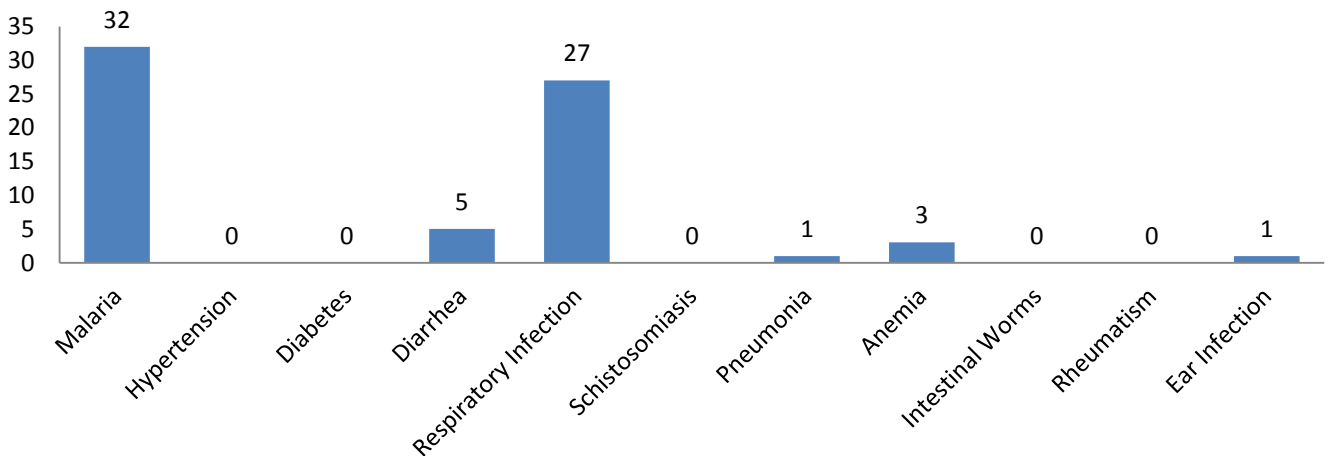
| | |
|---|----|
| Number of Patients to Receive Referrals | 42 |
|---|----|

Community Report

Patients' Age Distribution



Common Illnesses*



*Common Illnesses in Ghana as determined by the World Health Organization. There could be more cases than shown, due to diagnosis terminology during input into OpenMRS.

Keep in Touch

Stay Connected

[Global Brigades](#)

[Volunteer Resource Site](#)

[Student Introduction Packet](#)

[Facebook](#)

[Blog](#)

[YouTube](#)

Contact The Ghana Global Health Program Staff

Abraham Arhin (Data Informatics Lead):

Data.informaticsGH@globalbrigades.org

Maame Afua Kumi-Takyiwaa (Program Lead):

afuakumi@globalbrigades.org

Rachel Almburg (Program Manager):

Rachel.almburg@globalbrigades.org

Justine Behan (Program Associate):

justine.behan@globalbrigades.org

Amanda Ottosson (Program Associate):

amanda.ottosson@globalbrigades.org