

# Community Report



**Global Brigades Ghana**  
Medical / Dental Brigades  
DREXEL

December 27, 2013 – January 4, 2014

[ADANSEMAIM](#)

# Community Report

## ADANSEMAIM

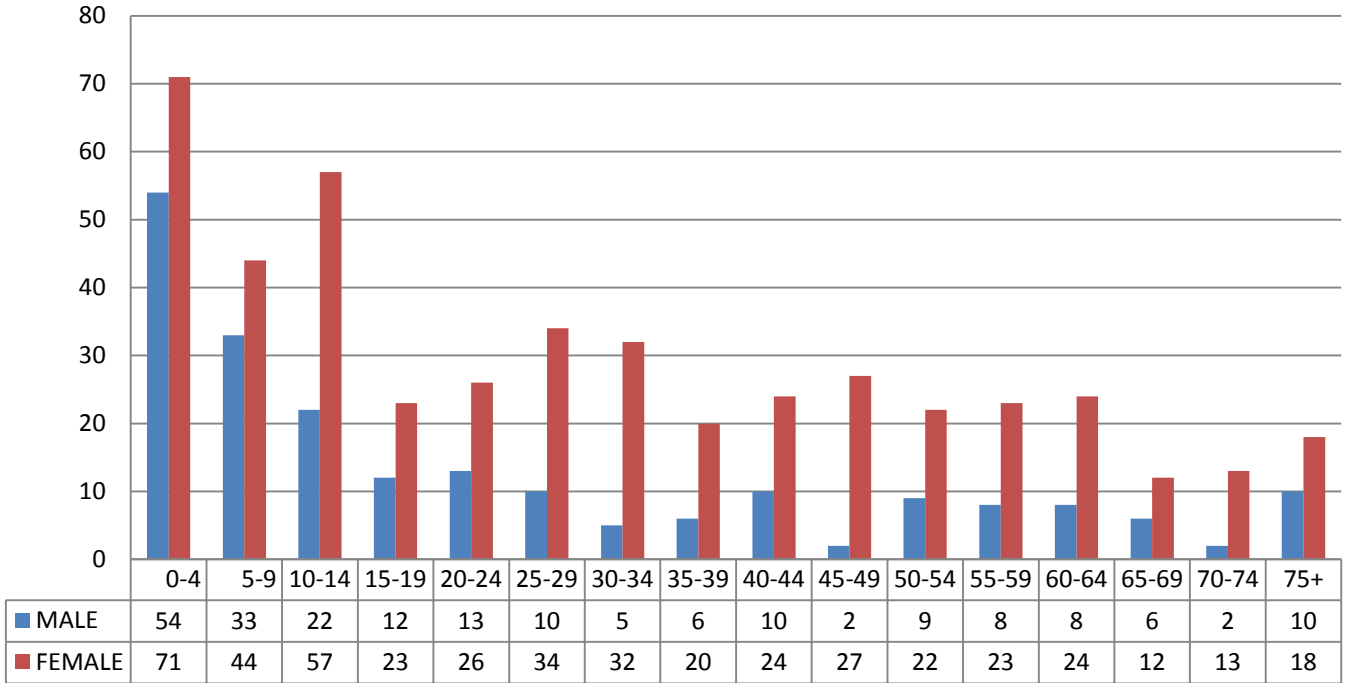
Total number of patients attended : 680

Male: 210

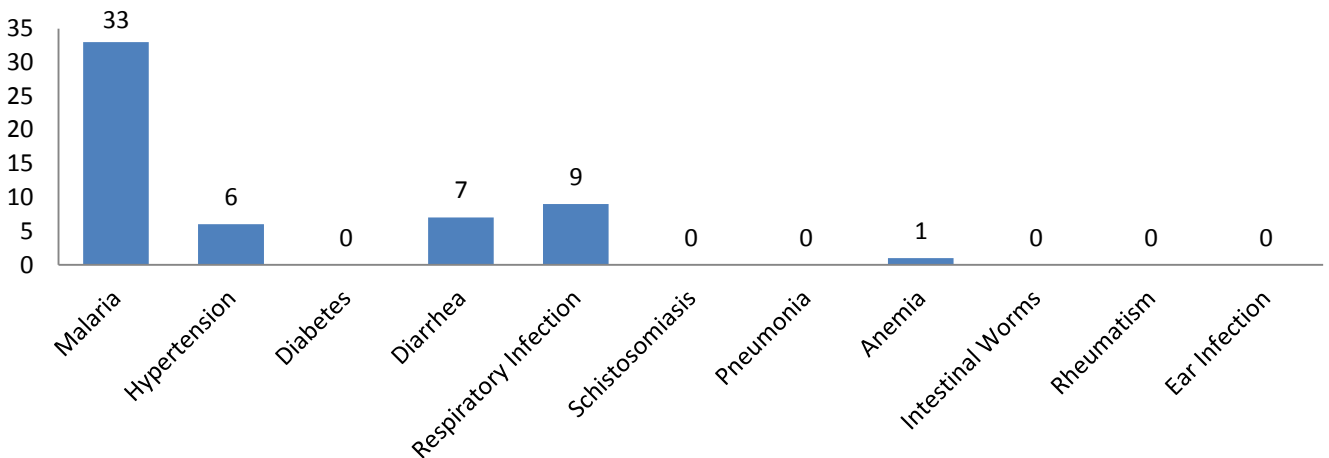
Female: 470

DIAGNOSIS	
Respiratory diagnosis	22
Gastrointestinal diagnosis	14
Infectious disease diagnosis	72
Pain diagnosis	69
Dermatology diagnosis	8
Chronic diagnosis	6
DENTAL	
Extraction	17
Filling	0
Sealants	0
OBGYN	
Number of Cervical Cancer Screenings	28
REFERRAL	
Number of Patients to Receive Referrals	5

## Patients' Age Distribution



## Common Illnesses



\*Common Illnesses in Ghana as determined by the World Health Organization. There could be more cases than shown, due to diagnosis terminology during input into OpenMRS.

# Keep in Touch

## Stay Connected

[Global Brigades](#)

[Volunteer Resource Site](#)

[Student Introduction Packet](#)

[Facebook](#)

[Blog](#)

[YouTube](#)

## Contact The Ghana Global Health Program Staff

Abraham Arhin (Data Informatics Lead):

[Data.informaticsGH@globalbrigades.org](mailto:Data.informaticsGH@globalbrigades.org)

Maame Afua Kumi-Takyiwaa (Program Lead):

[afuakumi@globalbrigades.org](mailto:afuakumi@globalbrigades.org)

Rachel Almburg (Program Manager):

[Rachel.almburg@globalbrigades.org](mailto:Rachel.almburg@globalbrigades.org)

Justine Behan (Program Associate):

[justine.behan@globalbrigades.org](mailto:justine.behan@globalbrigades.org)

Amanda Ottosson (Program Associate):

[amanda.ottosson@globalbrigades.org](mailto:amanda.ottosson@globalbrigades.org)