

Community Report



Global Brigades Ghana
Medical / Dental Brigades
Texas A&M (DENTAL) UNC Chapel
Hill (MEDICAL)
December 27, 2013 – January 5, 2014
[EKRAWFUL](#)

Community Report

EKRAWFUL

Total number of patients attended : 453

Male: 115

Female: 338

DIAGNOSIS

Respiratory diagnosis	22
Gastrointestinal diagnosis	15
Infectious disease diagnosis	86
Pain diagnosis	102
Dermatology diagnosis	12
Chronic diagnosis	4

DENTAL

Extraction	14
Filling	0
Sealants	0

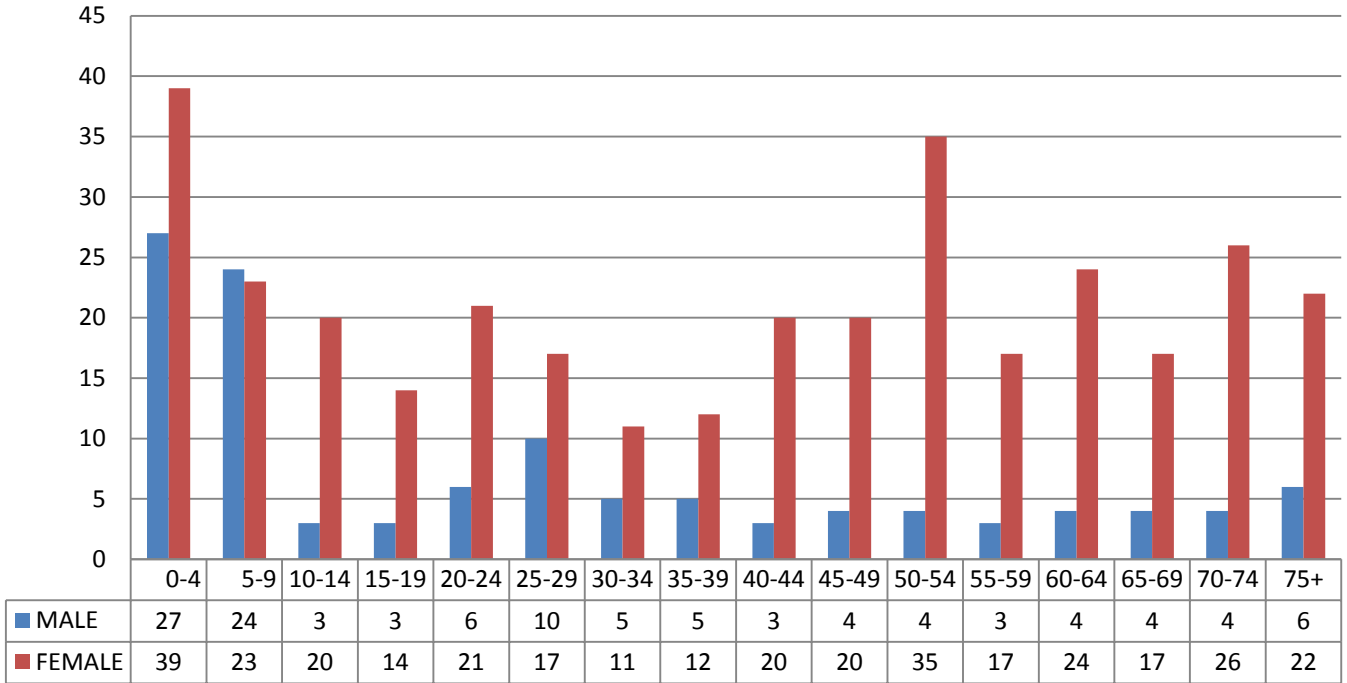
OBGYN

Number of Cervical Cancer Screenings	51
--------------------------------------	----

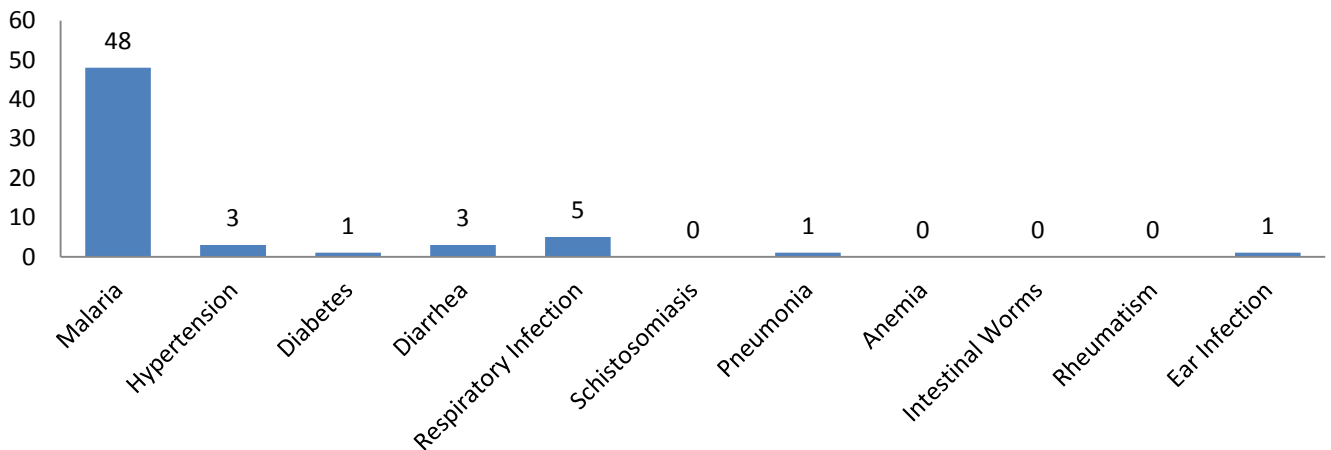
REFERRAL

Number of Patients to Receive Referrals	47
---	----

Patients' Age Distribution



Common Illnesses



*Common Illnesses in Ghana as determined by the World Health Organization. There could be more cases than shown, due to diagnosis terminology during input into OpenMRS.

Keep in Touch

Stay Connected

[Global Brigades](#)

[Volunteer Resource Site](#)

[Student Introduction Packet](#)

[Facebook](#)

[Blog](#)

[YouTube](#)

Contact The Ghana Global Health Program Staff

Abraham Arhin (Data Informatics Lead):

Data.informaticsGH@globalbrigades.org

Maame Afua Kumi- (Program Lead):

afuakumi@globalbrigades.org

Rachel Almburg (Program Manager):

Rachel.almburg@globalbrigades.org

Justine Behan (Program Associate):

justine.behan@globalbrigades.org

Amanda Ottosson (Program Associate):

amanda.ottosson@globalbrigades.org